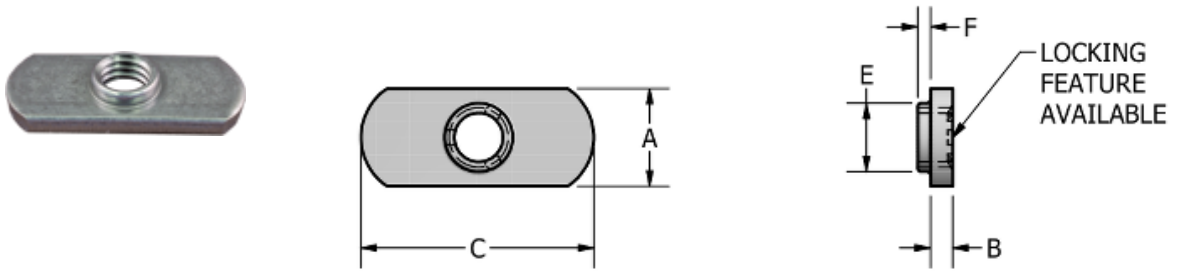


Double Tab Spotweld Nut: ND 4424



Thread Size	1/2-13
Width (in)	3/4
Thickness (in)	3/16
Length (in)	1 1/2
A (in)	0.750
Tol A (in)	+0.047 / -0.016
B (in)	0.188
Tol B (in)	+0.003 / -0.003
C (in)	1.500
Tol C (in)	+0.015 / -0.015
E (in)	0.584
Tol E (in)	+0.015 / -0.015
F (in)	0.090
Hole In Sheet (in)	0.604
Material	C1010 High-Welding Quality, Low Carbon Steel
Finish	Plain, Unless Specified
Threads	Unified Standard Class 2B ASME B 1.1-2003



DISTRIBUTED BY



advancecomponents.com

972-446-5500