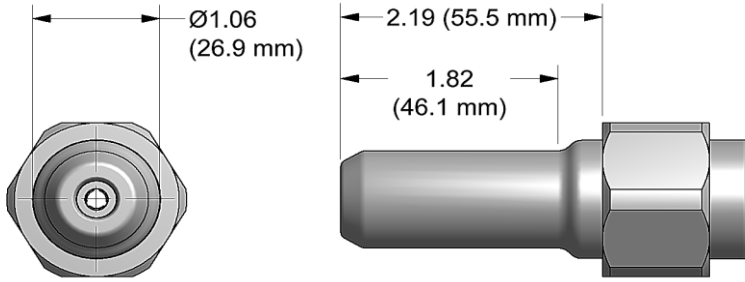


NOSE ASSEMBLY DATA SHEET



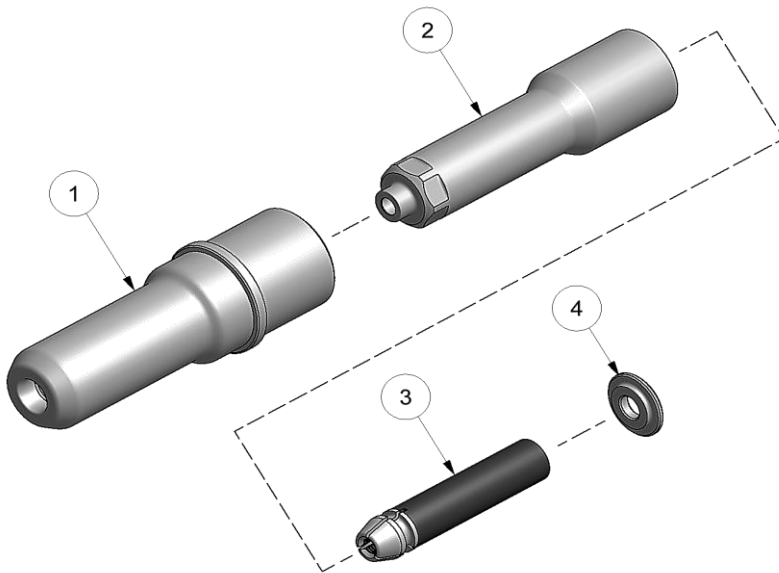
ASSEMBLY:

Note: If nose assy is assembled as it is when purchased new, follow steps 3-5 to attach to tool.

1. Insert super grip jaw assy (3) into collet (2).
2. Place spacer on rear of super grip jaw assy (3). (Note direction in exploded view).
3. Snug tighten assembled collet (2) to piston on tool using flats provided on collet (2) and hex in rear of piston on tool.
4. Slide anvil (1) over assembled collet (2) and thread into head cylinder on tool.
5. Slide retaining nut over anvil (1) and tighten nose assembly to tool. (Note: retaining nut stop not used for this nose assembly).

DISASSEMBLY:

Reverse assembly instructions.



9/16 REV. 9/17

GAGE BILT
MADE in USA

44766 Centre Court Clinton Twp. MI 48038 USA
Ph: +1 (586) 226-1500 Fax: +1 (586) 226-1505
solutions@gagebilt.com / www.gagebilt.com

| Type: | | Fastener: | Recommended Tool: |
|------------------------------|------|---------------------|---------------------------------------|
| Non Self-Releasing 1/4" Ø | | BOM®-R08 | GB745 |
| | | | Alternate Tools: GB756 & GB2581(A) |
| Ref. No. | Qty. | Description | BOM08-755A-23 |
| 1 | 1 | Anvil | 10805 |
| 2 | 1 | Collet | 28823 |
| 3 | 1 | Super Grip Jaw Assy | 30601-CS1 |
| 4 | 1 | Spacer | 40847 |