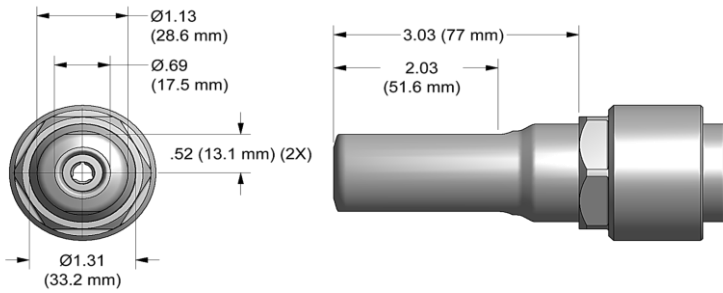
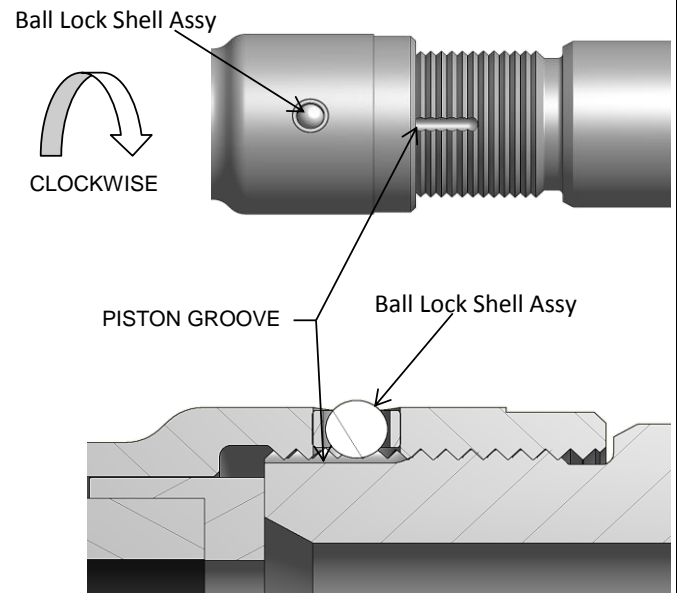
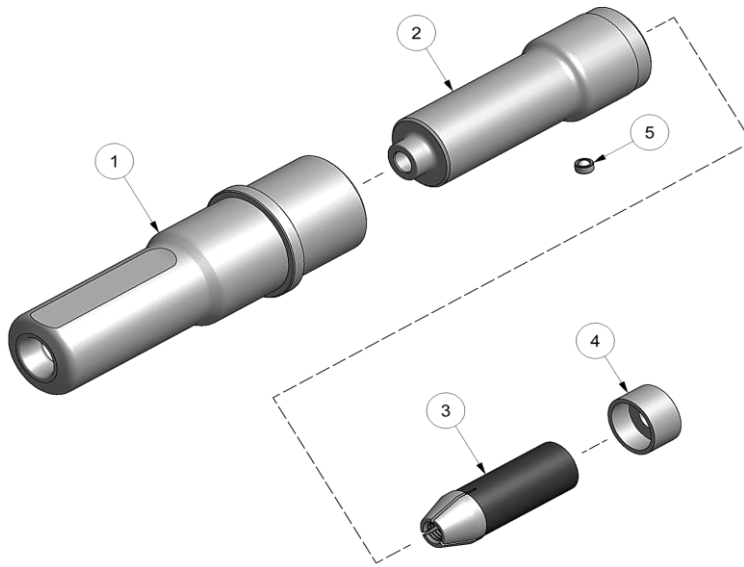


NOSE ASSEMBLY DATA SHEET



1. Ensure Piston is in full forward position.
2. Disconnect tool control cord.
3. Insert spacer (4) onto rear of super grip jaw assy (3).
4. Place super grip jaw assy (3) with attached spacer (4) into rear of collet assy (2).
5. Screw assembled collet onto piston on tool until it stops then back off until ball lock shell assy (5) engages piston groove.
6. If ball lock shell assy (5) is not in Piston groove, continue to turn 1/4 turn clockwise, or less, until lock engages groove.
7. Slide anvil (1) over collet assy (2). Slide retaining nut over anvil (1) and tighten nose assembly to tool.



5/19

GAGE BILT
MADE in USA

44766 Centre Court Clinton Twp. MI 48038 USA
Ph: +1 (586) 226-1500 Fax: +1 (586) 226-1505
solutions@gagebilt.com / www.gagebilt.com

Type:		Fastener:	Recommended Tool:
Non Self-Releasing 3/8" Ø		BOM®	
			GB2600
Ref. No.	Qty.	Description	BOM12-2600-30
1	1	Anvil	11271
2	1	Collet Assy (Inc. #5)	21262
3	1	Super Grip Jaw Assy	31242-CS
4	1	Spacer	41227
5	1	Ball Lock Shell Assy	54509