

GB2624PTD

HYDRAULIC
INSTALLATION TOOL

GAGE BILT

RIVET & LOCKBOLT TOOLS

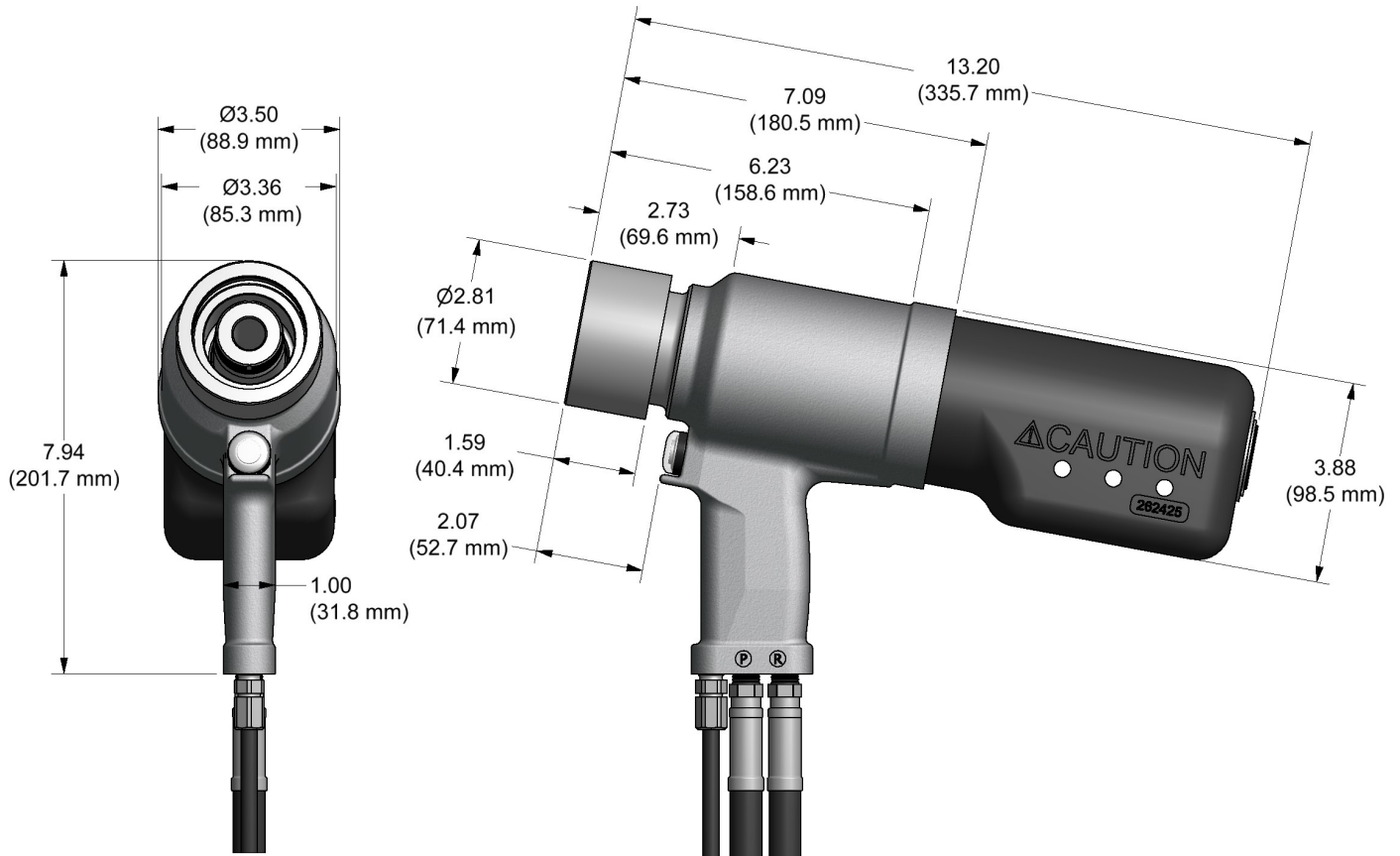
44766 Centre Ct. Clinton Twp. MI 48038 USA

+1 586. 226.1500

+1 586. 226.1505

solutions@gagebilt.com

www.gagebilt.com



The GB2624PTD is a hydraulic installation tools designed specifically for the efficient installation of 1/2" BOM® fasteners. It weighs approximately 15 lbs. (6.80 kg), and can be operated in any position. It has a 1.687" (4.28cm) fastener stroke and a maximum rated pull load of 30,356 lbs. (135.03kN) @ 6,500 psi. (448 bar).

The GB2624PTD (Electric actuated) installation tool operates on hydraulic pressure developed by the GB947 Powerunit with a maximum pull pressure set at 7,400 psi. (510 bar) and a maximum return pressure set at 3,200 psi. (221 bar). The tool comes equipped with 2 feet (.6 m) of hydraulic hoses and couplings, electric switch and cord.

**ALL GAGE BILT HYDRAULIC INSTALLATION TOOLS ARE COMPATIBLE WITH EQUIVALENT POWERUNITS.
NOSE ASSEMBLIES ARE NOT FURNISHED WITH THESE TOOLS AND MUST BE ORDERED SEPARATELY.**





GB2620(A) ACCESSORIES

Approved for use on Gage Bilt CE installation tools and/or other manufacturer's CE approved tools of similar design.
(Sold Separately)



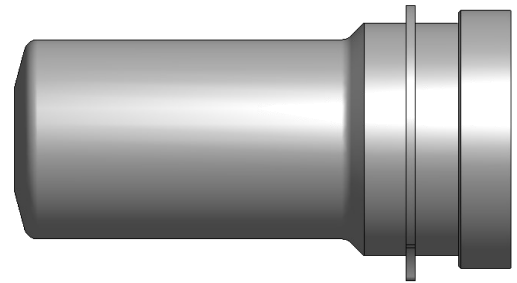
ACCESSORIES

(Sold Separately)

NOSE ASSEMBLY CHART

(Sold Separately)

GB947 POWERUNIT



FASTENER	DIA.	NOSE ASSEMBLY
BOM® AVBOLT®	1/2"	BOM16-2624-37

BOM® IS A REGISTERED TRADEMARKS OF HOWMET AEROSPACE. AVBOLT® IS A REGISTERED TRADEMARKS OF AVDEL UK LIMITED

GAGE BILT CERTIFIES THE GB2624PTD WILL INSTALL THE ABOVE FASTENERS

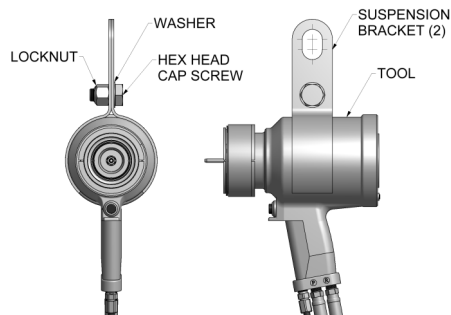
See gagebilt.com/nose_assemblies.php for nose assembly information (data sheets)

NOTE: THE LAST 2 DIGITS OF THE NOSE ASSEMBLY REPRESENTS THE LENGTH THE NOSE ASSEMBLY EXTENDS FROM THE TOOL. (I.e. -37 = 3.7 inches)

12/22

SUSPENSION BRACKET

(Sold Separately)



The use of suspension bracket Assembly (A-1800) is strongly recommended as it increases ergonomic flexibility and reduces fatigue for users while installing fasteners.

Suspension Bracket Assembly (A-1800) contains the bracket and hardware as shown in the figure.

RIVETER KITS

(Sold Separately)

Gage Bilt offers a wide selection of standard and custom kits tailored to your needs. Contact us for more information.



12, 26, 38 & 52 FT HOSE LENGTHS AVAILABLE FOR GB947 POWERUNIT.
CUSTOM HOSE LENGTHS ALSO AVAILABLE.
CONTACT GAGE BILT FOR MORE INFORMATION.