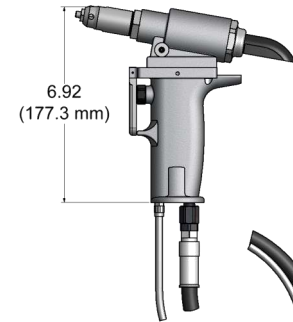


# GB703

## INSTALLATION TOOL SERIES

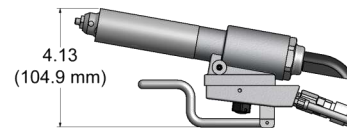
### GB703

Stroke - .780" (19.8 mm)  
 Hand held weight - 4.50 lbs (2 kg)  
 Entire tool weight - 4.50 lbs (2kg)  
 Pull load - 2,200 (9.8 kN)



### GB703SH

Stroke - .780" (19.8 mm)  
 Hand held weight - 2.00 lbs (.9 kg)  
 Entire tool weight - 7.25 lbs (3.3 kg)  
 Pull load - 2,200 (9.8 kN)



### GB703SR

Stroke - .780" (19.8 mm)  
 Hand held weight - 1.50 lbs (.7 kg)  
 Entire tool weight - 4.50 lbs (2 kg)  
 Pull load - 2,200 (9.8 kN)



*\*For pintail collection bottle and pintail evacuation tube options, see back.*

### DESCRIPTION

The GB703 series are pneumatic-hydraulic tools designed specifically for the efficient installation of a wide range of blind rivets. They can be operated in any position with one hand. They have a rated pull load of 2,200 pounds (9.8 kN) with 90 psi (6.2 bar) of air pressure at the air inlet.

The GB703SH and GB703SR riveters offer a unique "split" system providing the operator with an ergonomic tool with reduced hand held weight, as shown below. The GB703SH comes with 8 feet of hose and the GB703SR comes with 3 feet of hose.

The GB703 series riveters operate on 90 to 100 psi (6.2-6.9 bar) of air pressure, with 90 psi (6.2 bar) providing the maximum efficiency. At 90 psi (6.2 bar) air pressure, the GB703 series does not exceed 85 dB(A) and consumes 3 cfm at 20 cycles a minute.

Unless ordered rivet specific (I.E. GB703/4N), the GB703 series riveters are furnished with nose assembly 6N-703-18 and spare nose tip 10202 and follower 40307 to convert to 4N-703-18 nose assembly. All other nose tips must be ordered separately. When ordering tool rivet specific, contact Gage Bilt for more information.



# GB703-NOSE ASSEMBLY SELECTION CHART & ACCESSORIES



## ACCESSORIES (SOLD SEPARATELY)

**Air Bleeder Assy**  
#704153  
(Equivalent to #700A77)



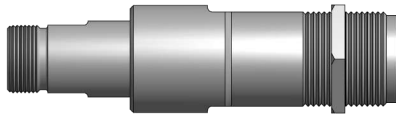
**Catcher Bag**  
#704214  
(Equivalent to #670A20)



### Extensions

These extensions help reach many restricted areas by increasing the overall length of the nose assembly. They fit directly on the GB703 Installation Tool.

L	Part Number	Equivalent to:
2"	703002	743A50
4"	703004	-
6"	703006	-



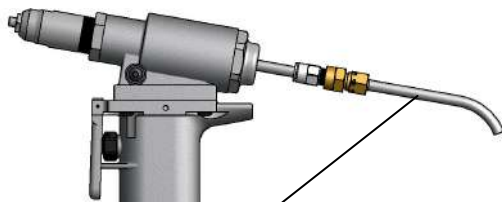
Unless ordered rivet specific (I.E. GB703/4N), the GB703 series riveters are furnished with nose assembly 6N-703-18 and spare nose tip 10202 and follower 40307 to convert to 4N-703-18 nose assembly. All other nose tips must be ordered separately. When ordering tool rivet specific, contact Gage Bilt for more information.

**"VT" riveters are not furnished with the nose assemblies above and must be ordered for your specific rivet.**

## OPTIONS

The GB703 series riveters may be ordered with a vacuum system. Gage Bilt offers two varieties (see below).

Order GB703 series riveters rivet specific by adding the appropriate suffix (see selection chart).



"VT" DESIGNATION = PINTAIL EVACUATION TUBE (TOOL MUST BE ORDERED FOR YOUR SPECIFIC RIVET. CONTACT GAGE BILT INC. FOR SPECIFIC APPLICATIONS.)

## NOSE ASSEMBLY CHART (For Non-Vacuum Tools Only) (SOLD SEPARATELY)

RIVET	DIA.	NOSE ASSEMBLY	NOSE TIP 1	JAW	FOLLOWER	DESIGNATION
AVEX® (1624 PROTRUDING HEAD)	3/16	AV6-703-18 1	10141	30617	40605	AV6
AVEX (1624 COUNTERSUNK HEAD)	3/16	6C-703-18 1	10141-1	30617	40605	6C
KLAMP-TITE® (STRUCTURAL) RIVET	3/16	6KT-703-18 1	10263	30617	40605	6KT
	1/4	8KT-743-24 2	-	-	-	8KT
MACHINE SCREW RIVET	5MM	MS5M-703-18 1	10332	30617	40605	5MM
MILLIMETER SEAL PLUG	4MM	5N-703-18 1	10203	30617	40605	5N
	5MM	6N-703-18 1	10204	30617	40605	6N
MONOBOLT® RIVET	3/16	MB06-734A-20 2,5	-	-	-	MB06
	1/4 3	MB08-734A-20 2,5	-	-	-	MB08
NUTPLATE RIVET CCR244/264/274 BACR15DR MS20600	3/32	3NP-703-18 1	10231	30617	40307	3NP
	1/8	5N-703-18 1	10203	30617	40605	5N
OPEN END NAIL RIVET	3/32	3N-703-18 1	10201	30617	40307	3N
	1/8	4N-703-18 1	10202	30617	40307	4N
	5/32	5N-703-18 1	10203	30617	40605	5N
	3/16	6N-703-18 1	10204	30617	40605	6N
CLOSED END NAIL RIVET (ALUMINUM MANDREL)	3/32	3N-703-18 1	10201	30617	40307	3N
	1/8	4CEA-703-18 1	13471	30617	40307	4CEA
	5/32	5CEA-703-18 1	13472	30617	40605	5CEA
	3/16	6CEA-703-18 1	13473	30617	40605	6CEA
CLOSED END NAIL RIVET (STEEL MANDREL)	3/32	3N-703-18 1	10201	30617	40307	3N
	1/8	4CES-703-18 1	13475	30617	40307	4CES
	5/32	5CES-703-18 1	13476	30617	40605	5CES
	3/16	6CES-703-18 1	13477	30617	40605	6CES
PLASTIC SPLIT RIVET	1/4 3	8CES-743-24 2	-	-	-	8CES
	3/32	3P-703-18 1	10247-1	30617	40307	3P
	1/8	4P-703-18 1	10202-4	30617	40307	4P
	5/32	5P-703-18 1	10203-2	30617	40605	5P
T RIVET®	3/16	6P-703-18 1	10167	30617	40605	6P
	1/4	8P-743-24 2	-	-	-	8P
TLR® RIVET	1/4 3	8T-743-24 2	-	-	-	8T
<b>COUNTERSUNK HEAD</b>	1/4	8TLR-743-24 2	-	-	-	8TLR
	3/16	C6-734A-20 2,5	-	-	-	C6
<b>PROTRUDING HEAD</b>	1/4 4	C8-734A-20 2,5	-	-	-	C8
	3/16	PH6-734A-20 2,5	-	-	-	PH6
SERRATED STEM STRUCTURAL RIVET	1/4 4	PH8-734A-20 2,3,5	-	-	-	PH8
	1/4 4	PH8-734A-20 2,3,5	-	-	-	PH8

AVEX®, KLAMP-TITE®, TLR®, AND MONOBOLT® ARE REGISTERED TRADEMARKS OF AVDEL UK LIMITED. T RIVET® IS A REGISTERED TRADEMARK OF CHERRY AEROSPACE FASTENERS.

1) YOU CAN CHANGE THE 703-18 NOSE ASSEMBLY (INCLUDED WITH TOOL) TO INSTALL OTHER FASTENERS BY PURCHASING NOSE TIP SHOWN AND USING APPROPRIATE FOLLOWER SHOWN.

2) NOSE ASSEMBLIES WITH A 743-24 AND 734A-20 DESIGNATION, I.E. 8N-743-24, MUST BE ORDERED AS COMPLETE NOSE ASSEMBLY.

3) ALUMINUM RIVET STEEL MANDREL ONLY (100 PSI REQUIRED FOR ALL 1/4" STEEL RIVETS).

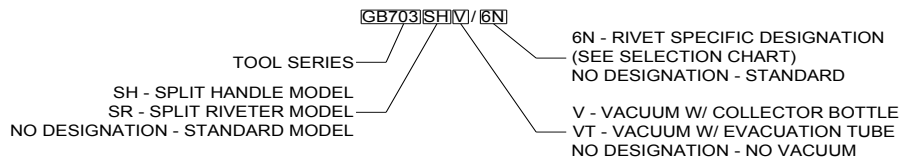
4) 1/4" ALUMINUM ONLY.

5) NOSE ASSEMBLIES WITH A 734A DESIGNATION, I.E. PH6-734A-20, ARE FOR SERRATED STEM RIVETS ONLY. IF YOU ARE PULLING BOTH SMOOTH AND SERRATED STEM RIVETS YOU MUST ORDER THE NOSE ASSEMBLY WITH A 743 DESIGNATION, I.E. MGL06-743-24.

NOTE: THE LAST 2 DIGITS OF THE NOSE ASSEMBLY REPRESENTS THE LENGTH THE NOSE EXTENDS FROM THE TOOL. I.E. -20 = 2.0 INCHES

REV. 10/14

## HOW TO ORDER GB703 SERIES TOOLS



"V" DESIGNATION = PINTAIL COLLECTION BOTTLE

Rev. 10/16