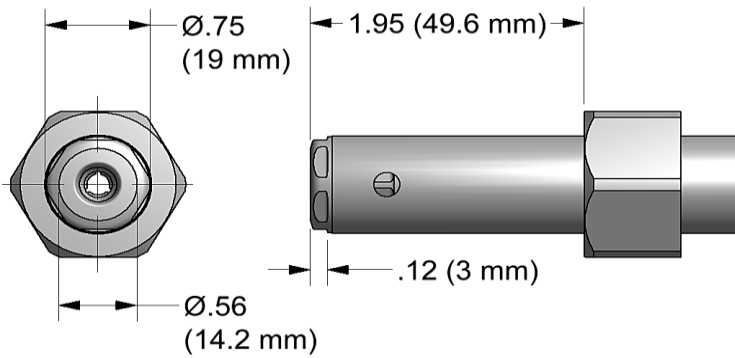


# NOSE ASSEMBLY DATA SHEET



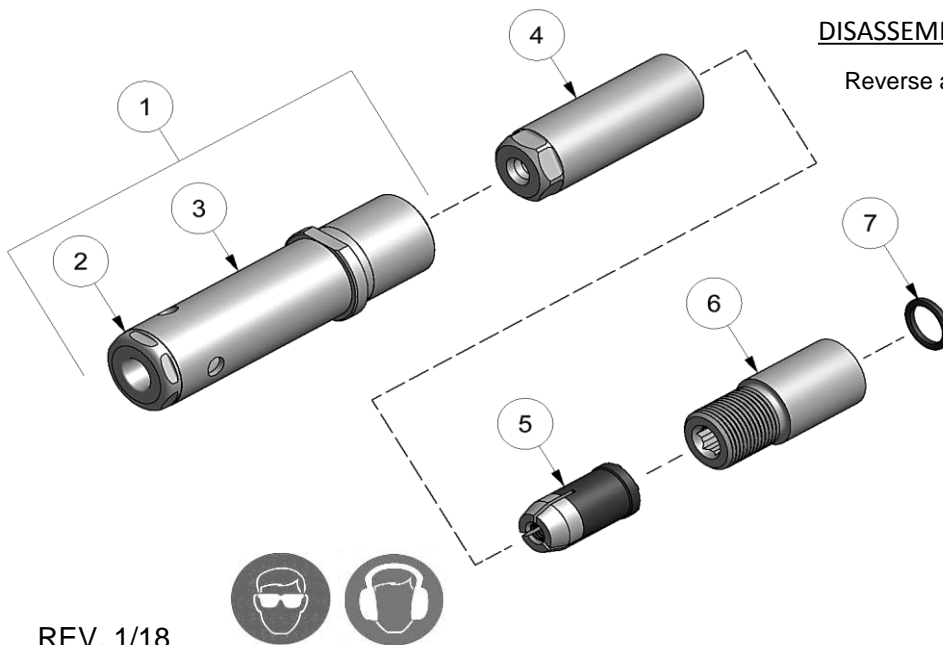
## ASSEMBLY:

**Note:** If nose assy is assembled as it is when purchased new, follow steps 3-5 to attach to tool.

1. Insert super grip jaw assy (5) into rear of collet (4). (Note direction in exploded view).
2. Thread collet (4) to extension-collet (6) using hex key in front of collet-extension (6) and flats provided on collet (4).
3. Insert o'ring (7) into rear of extension-collet (6) then thread assembled collet (3) and extension-collet (6) onto piston of tool using flats provided and hex in rear of piston.
4. Slide anvil & holder assy (1) over collet (4).
5. Slide retaining nut over ears on anvil and tighten to tool. (Note: retaining nut stop not used with this nose assembly).

## DISASSEMBLY:

Reverse assembly instructions.



REV. 1/18



# GAGE BILT

MADE in USA



advancecomponents.com 972-446-5500

Type:		Fasteners:	Recommended Tool: GB722	
Non Self-Releasing 3/16 & 1/4 Ø		Commercial Lockbolt C6L®, Avdelok®	Alternate Tools: GB731 & GB2480(A)	
Ref. No.	Qty.	Description	LB06-722-20	LB08-722-20
1	1	Anvil & Holder Assy	16002	18873
2	1	Anvil	16003	18874
3	1	Holder	12242-3	12242-2
4	1	Collet	20636	20841
5	1	Super-Grip Jaw Assy	30653-CS	30861-CS
6	1	Extension-Collet	70823	70823
7	1	O'Ring	400778	400778