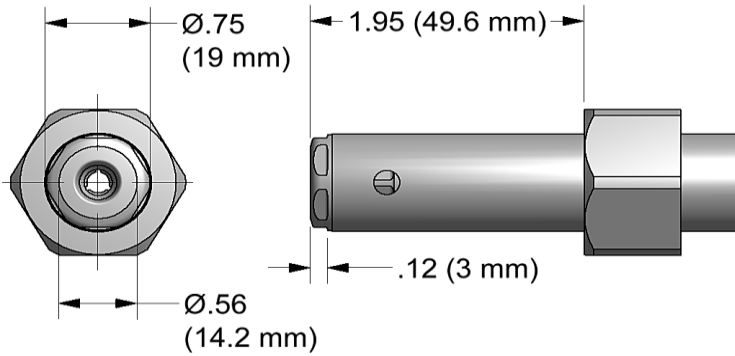


NOSE ASSEMBLY DATA SHEET



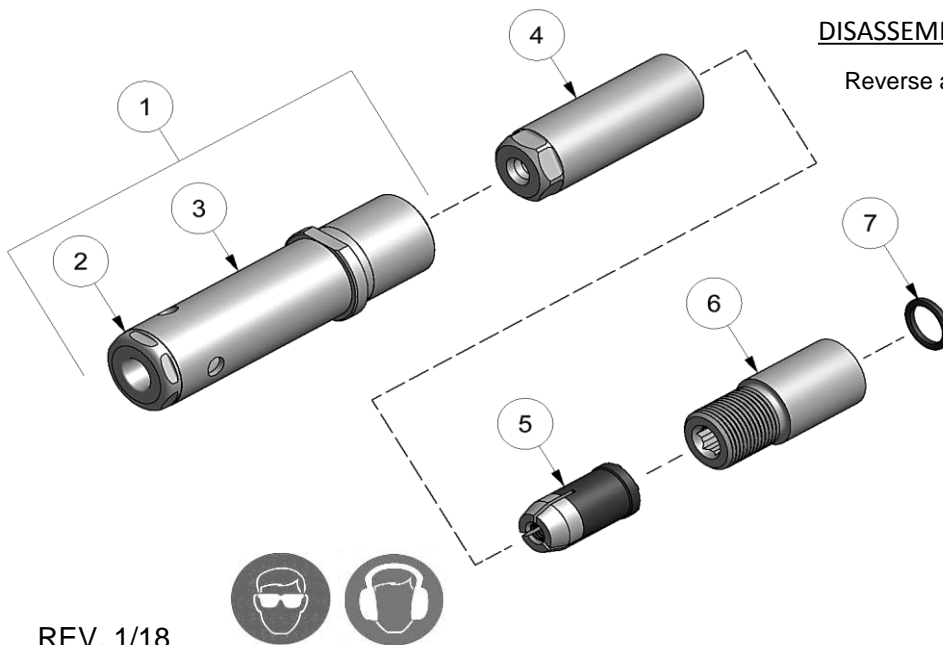
ASSEMBLY:

Note: If nose assy is assembled as it is when purchased new, follow steps 3-5 to attach to tool.

1. Insert super grip jaw assy (5) into rear of collet (4). (Note direction in exploded view).
2. Thread collet (4) to extension-collet (6) using hex key in front of collet-extension (6) and flats provided on collet (4).
3. Insert o'ring (7) into rear of extension-collet (6) then thread assembled collet (3) and extension-collet (6) onto piston of tool using flats provided and hex in rear of piston.
4. Slide anvil & holder assy (1) over collet (4).
5. Slide retaining nut over ears on anvil and tighten to tool. (Note: retaining nut stop not used with this nose assembly).

DISASSEMBLY:

Reverse assembly instructions.



REV. 1/18



GAGE BILT

MADE in USA



advancecomponents.com 972-446-5500

| Type: | | Fasteners: | | Recommended Tool: GB722 | |
|------------------------------------|------|---------------------------------------|--|---------------------------------------|-------------|
| Non Self-Releasing 3/16 & 1/4 Ø | | Commercial Lockbolt C6L®, Avdelok® | | Alternate Tools: GB731 & GB2480(A) | |
| Ref. No. | Qty. | Description | | LB06-722-20 | LB08-722-20 |
| 1 | 1 | Anvil & Holder Assy | | 16002 | 18873 |
| 2 | 1 | Anvil | | 16003 | 18874 |
| 3 | 1 | Holder | | 12242-3 | 12242-2 |
| 4 | 1 | Collet | | 20636 | 20841 |
| 5 | 1 | Super-Grip Jaw Assy | | 30653-CS | 30861-CS |
| 6 | 1 | Extension-Collet | | 70823 | 70823 |
| 7 | 1 | O'Ring | | 400778 | 400778 |