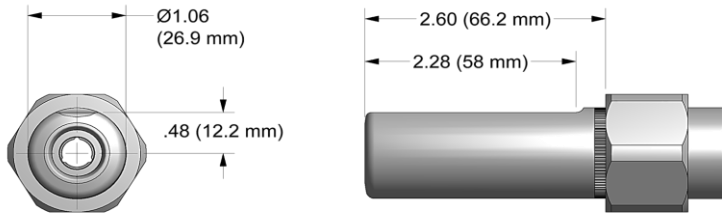


NOSE ASSEMBLY DATA SHEET



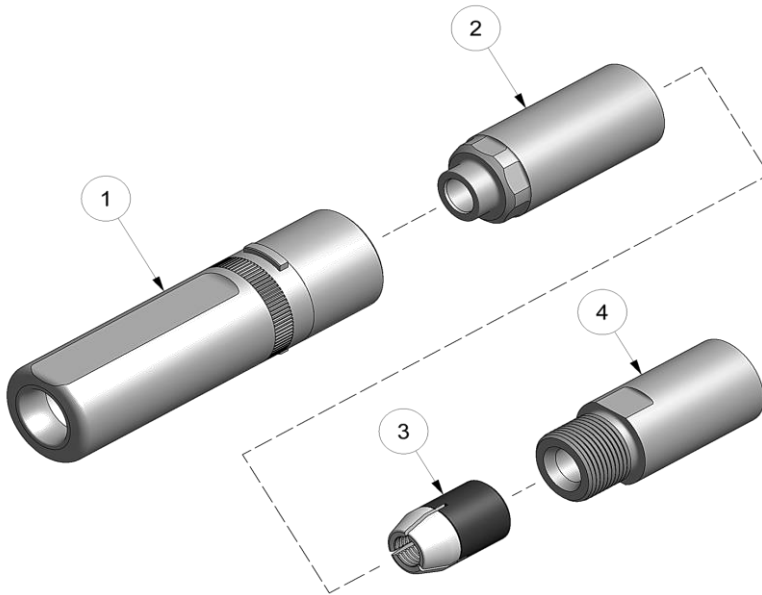
ASSEMBLY:

Note: If nose assy is assembled as it is when purchased new, follow steps 3-5 to attach to tool.

1. Insert super grip jaw assy (3) into rear of collet (2). (Note direction in exploded view).
2. Thread collet (2) to extension-collet (4) using flats provided.
3. Thread assembled collet (2) and extension-collet (4) onto piston of tool using flats provided and hex in rear of piston.
4. Slide anvil assy (1) over collet (2).
5. Slide retaining nut stop and retaining nut over ears on anvil (see exploded view) and tighten to tool.

DISASSEMBLY:

Reverse assembly instructions.



Rev. 6/18

*Anvil Assembly includes 35308 retainer.
 **GB745 not recommended for C120L lockbolts.

GAGE BILT
 MADE in USA

44766 Centre Court Clinton Twp. MI 48038 USA
 Ph: +1 (586) 226-1500 Fax: +1 (586) 226-1505
 solutions@gagebilt.com / www.gagebilt.com

Type:		Fasteners:	Recommended Tools: GB756
Non Self-Releasing 3/8 Ø		Commercial Lockbolt	Alternate Tools: **GB745 & GB2581(A)
Ref. No.	Qty.	Description	LB12-756-26
1	1	*Anvil Assy	11202
2	1	Collet	21224
3	1	Super-Grip Jaw Assy	31226-S
4	1	Extension-Collet	71219