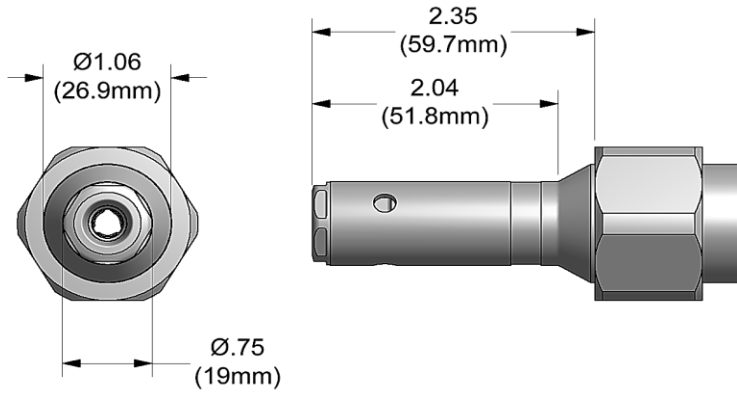


NOSE ASSEMBLY DATA SHEET



ASSEMBLY:

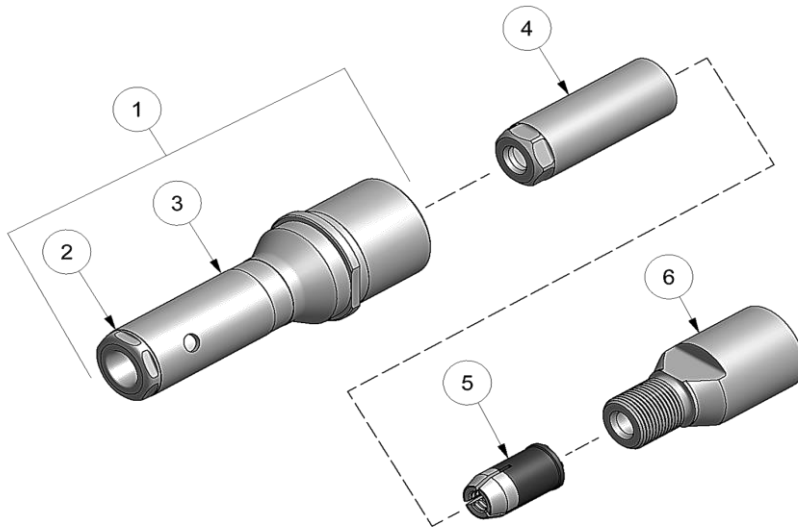
Note:

- A. Apply Vibra-tite® p/n 405125 to all threads and allow it to set 20 minutes prior to assembly.
- B. Tighten collet extension (6) to piston on tool 80-100 IN-LB torque.
- C. If nose assy is assembled as it is when purchased new, follow steps 3-5 to attach to tool.

1. Insert super grip jaw assy (5) into collet (4). (Note direction in exploded view).
2. Tighten extension-collet (6) and collet (4) together using 9/16" wrench and 1/4" hex key in rear of extension-collet (6).
3. Thread assembled collet (4) and extension - collet (6) to piston on tool. Tighten assembled parts using 9/16" wrench on extension-collet (6) and hex key in rear of piston on tool.
4. Slide anvil & holder assy (1) over assembled collet (4) and extension-collet (5).
5. Slide Retaining nut on anvil & holder assy (1) and tighten. (Note: Retaining nut stop not used in this nose assembly).

DISASSEMBLY:

Reverse assembly instructions.



8/16 REV 10/18

GAGE BILT

MADE in USA

44766 Centre Court Clinton Twp. MI 48038 USA
 Ph: +1 (586) 226-1500 Fax: +1 (586) 226-1505
 solutions@gagebilt.com / www.gagebilt.com

Type:		Fasteners:	Recommended Tool: GB745
Non Self-Releasing 1/4" Ø		MAGNA-GRIP® Maxlok®	Alternate Tools: GB756 & GB2581(A)
Ref. No.	Qty.	Description	MG08-745-24
1	1	Anvil & Holder Assy (Incl. #2 & #3)	18022
2	1	Anvil-Insert	18872
3	1	Anvil Holder	12387-2
4	1	Collet	20841
5	1	Super-Grip Jaw Assy	30860-S
6	1	Extension-Collet	70832