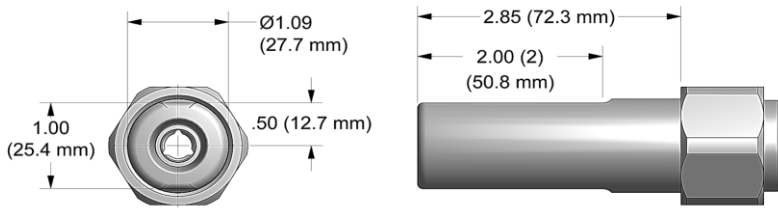


# NOSE ASSEMBLY DATA SHEET



## ASSEMBLY:

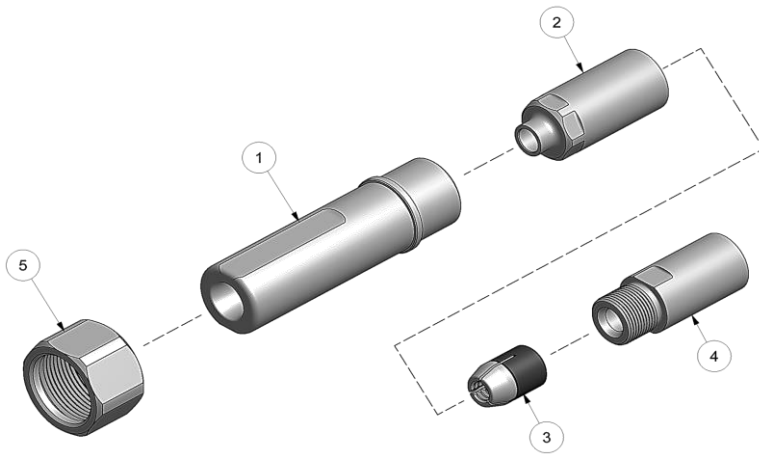
### Notes:

- Apply Vibra-tite® p/n 405125 to all threads and allow it to set 20 minutes prior to assembly.
- Tighten collet extension (6) to piston on tool 80-100 IN-LB torque.
- If nose assy is assembled as it is when purchased new, follow steps 3-5 to attach to tool.

- Insert super grip jaw assy (3) into rear of collet (2). (Note direction in exploded view).
- Thread collet (3) to extension-collet (6) using flats provided on collet-extension (6) and on collet (3).
- Thread assembled collet (3) and extension-collet (6) onto piston of tool using flats provided and hex on rear of piston.
- Slide anvil & holder assy (1) over collet (2).
- Slide nut over rib on anvil (see exploded view) and tighten to tool.

## DISASSEMBLY:

Reverse assembly instructions.



4/06 REV 10/18

**GAGE BILT**  
MADE in USA

44766 Centre Court Clinton Twp. MI 48038 USA  
Ph: +1 (586) 226-1500 Fax: +1 (586) 226-1505  
solutions@gagebilt.com / www.gagebilt.com

Type:		Fasteners:	Recommended Tool: GB756	
Single Action 5/16 & 3/8 Ø		MAGNA-GRIP®	Alternate Tools: GB2581(A)	
Ref. No.	Qty.	Description	MG10-756-28	MG12-756-28
1	1	Anvil	11051	11250
2	1	Collet	21040	21244
3	1	Super-Grip Jaw Assy	31027-S	31227-S
4	1	Extension-Collet	71219	71219
5	1	Nut	71250	71250