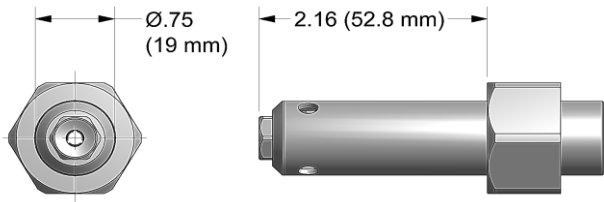


NOSE ASSEMBLY DATA SHEET



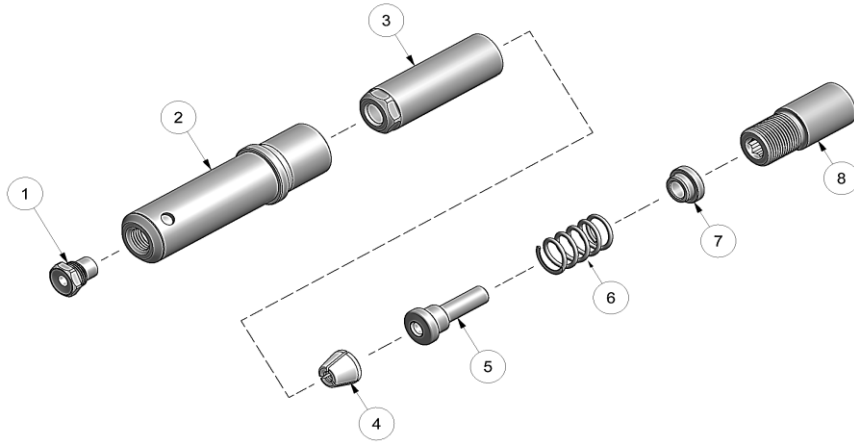
ASSEMBLY:

Note: If nose assy is assembled as it is when purchased new, follow steps 5-7 to attach to tool.

1. Place extension-collet (8) on a flat work surface hex side up.
2. Place cap (7) on extension-collet (8). Note direction from exploded view.
3. Place spring (6) on top of cap (7). Insert follower (5) thru spring (6) and into cap (7) and extension-collet (8). Place jaw set (4) on top of follower (5).
4. Slide collet (3) over assembled parts and thread collet (3) to extension-collet (8). Snug tighten assembled parts using 9/16" wrench on collet (3) and 1/4" hex key in rear on extension-collet (8)
5. Thread assembled collet (3) and extension-collet (8) onto piston assy on tool and snug with 9/16" wrench on collet (3) and hex key into rear of piston of tool.
6. Slide anvil holder assy (2) over assembled collet (3) and extension-collet (8).
7. Slide retaining nut from tool (retaining nut stop not used in this nose assembly) over anvil holder assy (2) and tighten.

DISASSEMBLY:

Reverse assembly instructions.



| Fastener: | Dia. | Nose Assembly | Nose Tip | | Jaw Set |
|-----------------------------|-------|----------------|-----------------|------------------|---------|
| | | | Protruding Head | Countersunk Head | |
| Multi-Grip Protruding Head | 3/16" | MGL06-752A-21 | 10248 | ----- | 30628 |
| | 1/4" | MGL08-752A-21 | 10205 | ----- | 36801 |
| Multi-Grip Countersunk Head | 3/16" | MGLC06-752A-21 | ----- | 10248-4 | 30628 |
| | 1/4" | MGLC08-752A-21 | ----- | 10211-1 | 36801 |
| Monobolt® | 3/16" | MB06-752A-21 | 10210 | 10210 | 30628 |
| | 1/4" | MB08-752A-21 | 10213 | 10213 | 36801 |
| Millimeter RV Plug | 6mm | RVM6-752A-21 | ----- | 10167-2 | 36801 |
| | 7mm | RVM7-752A-21 | ----- | 10166-2 | 36801 |
| | 8mm | RVM8-752A-21 | ----- | 10166-3 | 36801 |

Rev. 3/16

DISTRIBUTED BY

GAGE BILT
MADE IN U.S.A.

ADVANCE
COMPONENTS

advancecomponents.com 972-446-5500

| Type: | | Fastener: | Recommended Tool: |
|----------------|------|-------------------|---------------------------------------|
| Self-Releasing | | See Chart | GB713 |
| | | | Alternate Tools: GB722 & GB2480(A) |
| Ref. No. | Qty. | Description | MGL08-752A-21 |
| 1 | 1 | Nose Tip | See Chart |
| 2 | 1 | Anvil Holder Assy | 10942-7 |
| 3 | 1 | Collet | 20845 |
| 4 | 1 | Jaw Set | See Chart |
| 5 | 1 | Follower | 40811 |
| 6 | 1 | Spring | 50421 |
| 7 | 1 | Cap | 40810 |
| 8 | 1 | Extension-Collet | 70823 |