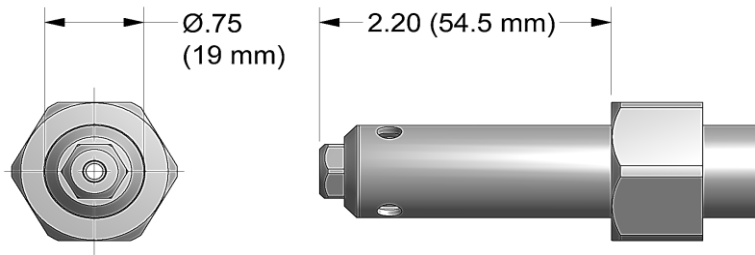


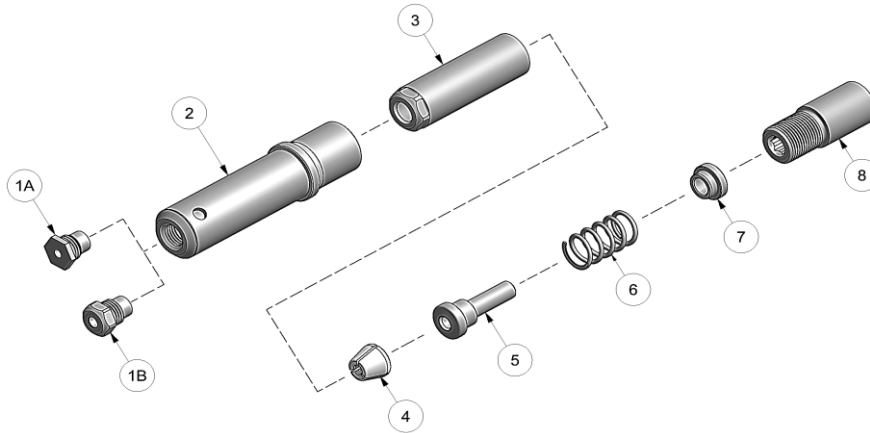
NOSE ASSEMBLY DATA SHEET



ASSEMBLY:

Note: If nose assy is assembled as it is when purchased new, follow steps 5-7 to attach to tool.

1. Place extension-collet (8) on a flat work surface hex side up.
2. Place cap (7) on extension-collet (8). Note direction from exploded view.
3. Place spring (6) on top of cap (7). Insert follower (5) thru spring (6) and into cap (7) and extension-collet (8). Place jaw set (4) on top of follower (5).
4. Slide collet (3) over assembled parts and thread collet (3) to extension-collet (8). Snug tighten assembled parts using 9/16" wrench on collet (3) and 1/4" hex key in rear on extension-collet (8).
5. Thread assembled collet (3) and extension-collet (8) onto piston assy on tool and snug with 9/16" wrench on collet (3) and hex key into rear of piston of tool.
6. Slide anvil holder assy (2) over assembled collet (3) and extension-collet (8).
7. Slide retaining nut from tool (retaining nut stop not used in this nose assembly) over anvil holder assy (2) and tighten.



DISASSEMBLY:

Reverse assembly instructions.

3/06 Rev. 3/16



GAGE BILT
MADE IN U.S.A.

GAGE BILT Inc.
44766 Centre Court +1 (586) 226-1500
Clinton Twp., MI 48038 +1 (586) 226-1505 Fax
e-mail:solutions@gagebilt.com / www.gagebilt.com

Type:		Fastener:		Recommended Tool: GB713	
Self-Releasing		Countersunk and Protruding Head Serrated Stem Structural Rivets		Alternate Tools: GB722 & GB2480(A)	
Ref. No.	Qty.	Description		MGLC68-752A-21	
1A	1	Nose Tip (3/16")		10248-4	
1B	1	Nose Tip (1/4")		10211-1	
2	1	Anvil Holder Assy		10942-7	
3	1	Collet		20845	
4	1	Jaw Set		36801	
5	1	Follower		40811	
6	1	Spring		50421	
7	1	Cap		40810	
8	1	Extension-Collet		70823	