

COILED SPRING PINS

PRODUCT INFORMATION



Vogelsang Coiled Spring Pins are stocked in Inch (1/16” to 3/4”), & Metric (1MM to 16MM), in a variety of materials, specifications & finishes.

Vogelsang Coiled Spring Pins enhance their all-purpose fastening characteristics by virtue of their construction. Light thickness material is wrapped around approximately 2.25\* times, producing a more resilient and versatile component. A coiled spring pin manufactured by Vogelsang offers the following;

Advantages:

- Absorbs Shock and Vibrations
- Uniform Length and Flexibility
- Equal Stress Distribution
- Controlled Radial Shock
- Conforms to Out-Of-Round Hole
- Swaged Chamfers
- Accommodates Wider Hole Tolerances
- Reduces Fastener Costs
- Will Not Gouge Softer Material

Features:

- SPC Control
- Lot Control
- Package/Bulk
- Special Length
- Standard/Medium Duty - Stock Item
- Heavy Duty - Stock Item
- Light Duty available

Applications:

The lighter wall thickness and inherent flexibility of the **Standard Duty** pin make it ideal for use in the more malleable or pliant applications. **Heavy Duty** pins offer superior shear strength and are highly recommended for applications where loading and stress factors are elevated.

Features:

- Coils distribute stress equally throughout the pin
- Pins flex after installation and when a load is applied
- Can be installed without regard to the direction of applied load
- The 2.25\* coil wrap absorbs shock and vibration
- Coiled Pins will provide a minimum of 270° surface contact in the hole

Get same-day shipment on thousands of Coiled Spring Pins with



COILED SPRING PINS

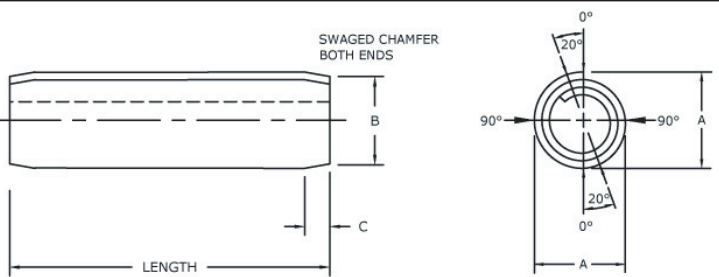
PRACTICAL SIZES & LENGTHS - INCH SERIES

Nominal Size or Basic Pin Diameter		A						B	C		Recommended Hole Size	Double Shear Load, Min., lb.					
		Pin Diameter						Chamfer		Standard Duty		Heavy Duty		Light Duty			
		Standard Duty		Heavy Duty		Light Duty		Dia.	Length			Material					
		Max.	Min.	Max.	Min.	Max.	Min.					Max.	Ref.	Max.	Min.	SAE 1070-1095 and SAE 51420	SAE 30302 and 30304
1/16	0.062	0.072	0.067	0.070	0.066	0.073	0.067	0.059	0.028	0.065	0.061	330	265	475	360	205	160
5/64	0.078	0.088	0.083	0.086	0.082	0.089	0.083	0.075	0.032	0.081	0.077	550	425	800	575	325	250
3/32	0.094	0.105	0.099	0.103	0.098	0.106	0.099	0.091	0.038	0.097	0.093	775	600	1,150	825	475	360
7/64	0.109	0.120	0.114	0.118	0.113	0.121	0.114	0.106	0.038	0.112	0.108	1,050	825	1,500	1,150	650	500
1/8	0.125	0.138	0.131	0.136	0.130	0.139	0.131	0.121	0.044	0.129	0.124	1,400	1,100	2,000	1,700	825	850
5/32	0.156	0.171	0.163	0.168	0.161	0.172	0.163	0.152	0.048	0.160	0.155	2,200	1,700	3,100	2,400	1,300	1,000
3/16	0.188	0.205	0.196	0.202	0.194	0.207	0.196	0.182	0.055	0.192	0.185	3,150	2,400	4,500	3,500	1,900	1,450
7/32	0.219	0.238	0.228	0.235	0.226	0.240	0.228	0.214	0.065	0.224	0.217	4,200	3,300	5,900	4,600	2,600	2,000
1/4	0.250	0.271	0.260	0.268	0.258	0.273	0.260	0.243	0.065	0.256	0.247	5,500	4,300	7,800	6,200	3,300	2,600
5/16	0.312	0.337	0.324	0.334	0.322	0.339	0.324	0.304	0.080	0.319	0.308	8,700	6,700	12,000	9,300	5,200	4,000
3/8	0.375	0.403	0.388	0.400	0.386	0.405	0.388	0.366	0.095	0.383	0.370	12,600	9,600	18,000	14,000		
7/16	0.438	0.469	0.452	0.466	0.450	0.471	0.452	0.427	0.095	0.446	0.431	17,000	13,300	23,500	18,000		
1/2	0.500	0.535	0.516	0.532	0.514	0.537	0.516	0.488	0.110	0.510	0.493	22,500	17,500	32,000	25,000		
5/8*	0.625	0.661	0.642	0.658	0.640			0.613	0.125	0.635	0.618						
3/4*	0.750	0.787	0.768	0.784	0.766			0.738	0.150	0.760	0.743						

Length	Diameter														
	.062	.078	.094	.125	.156	.187	.219	.250	.312	.375	.437	.500	.625	.750	
1/4	X														
5/16	X	X	X	X											
3/8	X	X	X	X	X										
7/16	X	X	X	X	X										
1/2	X	X	X	X	X			X							
9/16	X	X	X	X	X			X							
5/8	X	X	X	X	X	X	X	X							
11/16		X	X	X	X	X	X	X	X						
3/4		X	X	X	X	X	X	X	X	X					
13/16		X	X	X	X	X	X	X	X						
7/8		X	X	X	X	X	X	X	X						
15/16		X	X	X	X	X	X	X	X	X					
1		X	X	X	X	X	X	X	X	X	X				
1 1/8		X	X	X	X	X	X	X	X	X	X				
1 1/4		X	X	X	X	X	X	X	X	X	X	X			
1 3/8			X	X	X	X	X	X	X	X	X	X			
1 1/2			X	X	X	X	X	X	X	X	X	X			
1 5/8			X	X	X	X	X	X	X	X	X	X			
1 3/4			X	X	X	X	X	X	X	X	X	X			
1 7/8				X	X	X	X	X	X	X	X	X			
2				X	X	X	X	X	X	X	X	X	X	X	
2 1/4					X	X	X	X	X	X	X	X	X	X	
2 1/2						X	X	X	X	X	X	X	X	X	
2 3/4							X	X	X	X	X	X	X	X	
3							X	X	X	X	X	X	X	X	
3 1/4								X	X	X	X	X	X	X	
3 1/2								X	X	X	X	X	X	X	
3 3/4									X	X	X	X	X	X	
4									X	X	X	X	X	X	
4 1/4													X	X	
4 1/2													X	X	
4 3/4													X	X	
5													X	X	
5 1/4													X	X	
5 1/2													X	X	
5 3/4													X	X	
6													X	X	

**See back page for Technical Data, Length Tolerances & Straightness Tolerances**

See back page for Technical Data, Length Tolerances & Straightness Tolerances



\*2.25 wraps is approximate

\*Note 5/8 and 3/4 Rollpins® are made to Vogelsang Fastener Solutions' specifications.

Technical Data				
SPECIFICATION		MATERIAL		
ASME B.18.8.2 NASM 10971 NAS 1407 NAS 561 NASM 39086		CARBON STEEL	STAINLESS STEEL	
			CHROME TYPE 420	NICKEL TYPE 300
		Per Specification	Per Specification	Per Specification
		HARDNESS		
DIAMETER*	SCALE			
1/16 – 3/32	Vickers	420-545	460-560	Work Hardened
1/8 – 5/16	Rockwell 15N C	82-86.4 43-52	83.5-86.9 46-53	Work Hardened
3/8 – 1/2	Rockwell A C	72-76.8 43-52	73.6-77.4 46-53	Work Hardened
FINISH				
Standard	Plain/Oiled	Passivated	Passivated	
Options**	Zinc – Mechanical			

\*5/8 and 3/4 are to Vogelsang standards. \*\*Other finishes available upon request.

Length Tolerances	
NOMINAL PIN LENGTH	LENGTH TOLERANCE
Up to 2" inc	±0.010"
Over 2" to 3" inc	±0.015"
Over 3"	±0.025"

Straightness Tolerances	
PIN LENGTH	TOLERANCE
To and inc 1"	.007"
Over 1" to 2"	.010"
Over 3"	.013"



Coiled Spring Pins Product Catalog

- Strong
- Uniform
- Economical

Coiled Spring Pins enhance fastening characteristics of slotted spring pins by virtue of their construction. Light wall thickness material is wrapped around 2.25 times, producing a more resilient and versatile component.

Vogelsang Stocks Thousands of Other Products Too!

Vogelsang also stocks **Rollpins®** (Inch & Metric), **Tension Bushings** (Inch & Metric), all pre-packaged and ready for same-day shipment through **QuickShip**. In addition to these stock products, Vogelsang offers engineered specials to help solve your most challenging design and production issues. Give our engineering department a call and they'll be happy to meet with your design team.

Vogelsang Metric Coiled Spring Pins are Available in Heavy, Medium & Light Duty

Metric coiled spring pins come in both Heavy Duty ISO 8748 and Standard Duty ASME B18.8.3M ISO 8750. Manufactured to exacting tolerances, Vogelsang's metric pins are engineered for standard metric applications, and facilitate proper insertion into many worldwide products such as agricultural, off-road, wind power, automotive, mining, railway, hydraulic, and material handling to name just a few.

Vogelsang Also Offers Engineered Specials

When your most challenging assembly problems can't be solved with a stock product, our team of engineers will work with you to design and manufacture a custom solution. Give us a call today!



MASTER STOCKING DISTRIBUTOR



ADVANCECOMPONENTS.COM