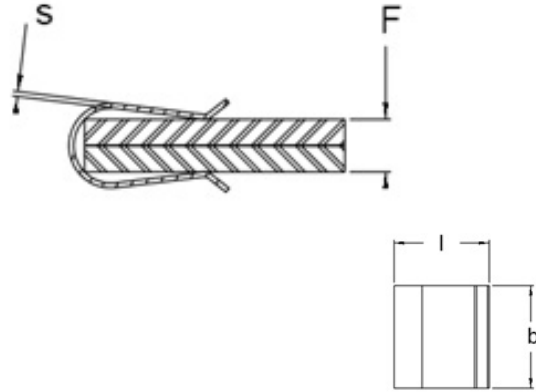
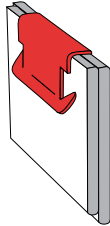


Panel Clips
U-Clips



APPLICATION INFORMATION



- Used for attaching two panels together
- Slide easily over metal, plastic or wooden panels providing firm, vibration-free assembly
- Self-sufficient - requiring no holes, screws, welds, rivets or other secondary fastening devices
- Turned-up lead lips on one or both legs ease assembly over the panel edges
- Some are equipped with barbs for positive retention of the panel
- No tools required
- Insertion and retention performance is dependent on component attributes and material

DESIGN VARIATIONS



(C) SQUARE BACK



(D) BARB ONE LEG



(E) BARBS BOTH LEGS

- A - Straight legs, no lead lips
- B - One straight leg, one lead lip
- C - Square back to ease insertion
- D - Barb on one leg to increase retention
- E - Barbs on legs to increase retention



On Panel Edges

Panel Clips

U-Clips

Imperial

Part Number	Legacy Part Number	Panel Thickness (F)	Width (b)	Length (l)	Material Thickness (s)	Design Variation
136804	C25341-014	0.035 - 0.045	0.380	0.200	0.014	ACE
136794	C23928-014	0.046 - 0.056	0.380	0.200	0.014	ACE
137537	D20285-017	0.050 - 0.100	0.500	0.340	0.017	BE
137549	D27091-014	0.115 - 0.185	0.500	0.420	0.014	E
137577	D43806-014	0.170 - 0.205	0.500	0.430	0.014	E
136895	C45931-014	0.245 - 0.255	0.500	0.360	0.014	CE
136933	C57065-014	0.270 - 0.320	0.500	0.265	0.014	CD
136924	C56147-014	0.320 - 0.340	0.500	0.270	0.014	CE

Metric

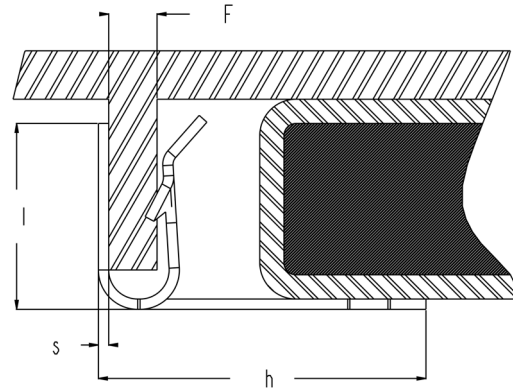
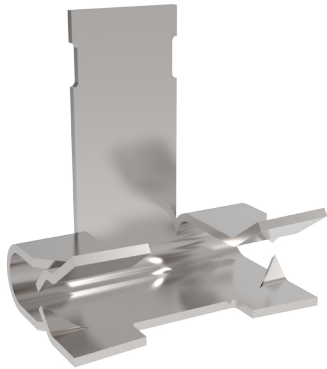
Part Number	Legacy Part Number	Panel Thickness (F)	Width (b)	Length (l)	Material Thickness (s)	Design Variation
011847	011847	0.75 - 2.00	13.00	4.70	0.30	-
013031	013031	1.00 - 2.20	20.00	8.75	0.50	-
054712	054712	1.00 - 2.50	10.00	9.70	0.40	-
013414	013414	1.50 - 3.50	20.00	13.00	0.60	-
013750	013750	3.00 - 4.50	25.00	12.00	0.45	-
053328	053328	4.00 - 5.00	12.70	8.70	0.50	-

Most parts manufactured in spring steel

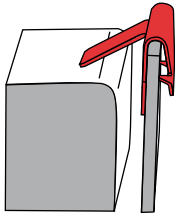


advancecomponents.com 972-446-5500

Panel Clips U-Clips - Special

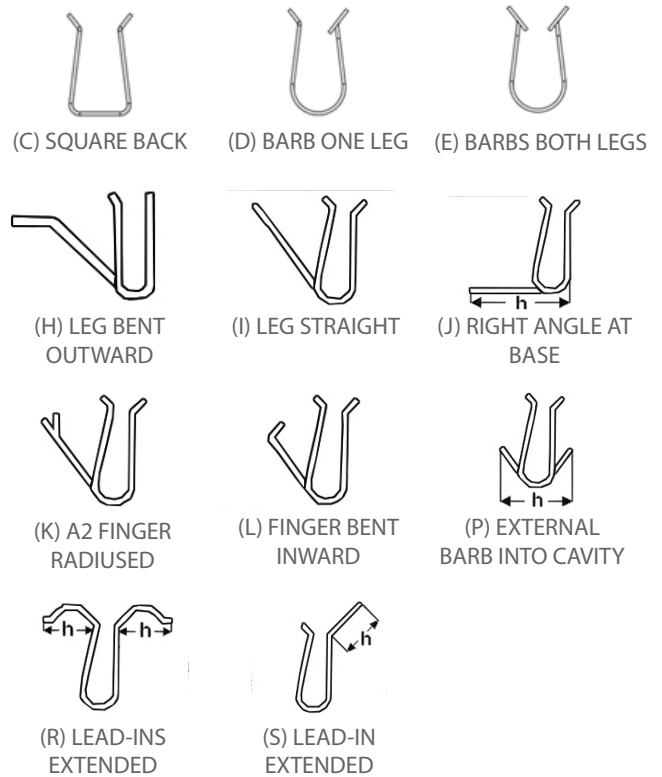


APPLICATION INFORMATION



- Specially designed panel clips featuring a "U-shaped" clip that secures to one panel, and another feature that secures or interferes with an additional component
- Designed to solve specific applications
- Several design variations to consider
- ARaymond can create new designs if needed for specific applications
- No tools required
- The amount of clamping action depends on the material thickness and design of the clip

DESIGN VARIATIONS



- A - Straight legs, no lead lips
- B - One straight leg, one lead lip
- C - Square back to ease insertion
- D - Barb on one leg to increase retention
- E - Barbs on legs to increase retention
- H, I, J, K - Alternative interference fit designs
- L - Snap fit interference design (can be serviceable)
- P - External barbs dig into cavity wall
- R, S - Extended lead lips trap two panels together



In Panel
Holes

Panel Clips

U-Clips - Special

Imperial

Part Number	Legacy Part Number	Panel Thickness (F)	Leg Height (h)	Width	Length (l)	Material Thickness (s)	Design Variation
136892	C44140-014	0.025 - 0.035	0.350	0.500	0.460	0.014	BFI
136818	C28015-025	0.030 - 0.110	0.190	0.875	0.635	0.025	FI
136765	C20597-017	0.042 - 0.048	0.610	0.500	0.300	0.017	BFJ
136788	C23259-017	0.042 - 0.062	0.525	0.500	0.290	0.017	BFJ
136824	C29019-014	0.055 - 0.065	0.360	0.500	0.310	0.014	BFH
136877	C41412-017	0.070 - 0.090	0.525	0.500	0.290	0.017	BEJ
136771	C21527-014	0.075 - 0.105	0.315	0.500	0.410	0.014	FH
136915	C54150-017	0.120 - 0.125	0.545	0.500	0.260	0.017	FIJ
136808	C25672-017	0.125 - 0.140	0.545	0.500	0.260	0.017	BCFJ
136820	C28036-017	0.090 - 0.110	0.180	0.500	0.350	0.017	BFS
137552	D28601-014	0.067 - 0.077	0.196	0.500	0.350	0.014	EP
136986	C58521-028	0.080 - 0.080	0.080	0.437	1.125	0.028	P
137579	D47463-017	0.105 - 0.115	0.240	0.500	0.380	0.017	AP

Metric

Part Number	Legacy Part Number	Panel Thickness (F)	Leg Height (h)	Width	Length (l)	Material Thickness (s)	Design Variation
137845	D99073-043M	0.78 - 1.04	9.44	12.70	8.28	0.43	BFI
137759	D98920-043M	1.82 - 1.95	3.00	25.40	10.50	0.43	FJ
137664	D98672-064M	1.10 - 3.10	1.00	18.00	17.50	0.64	CR
137007	C58664-064M	2.65 - 2.75	3.00	21.00	18.50	0.64	CEGR
136959	C58172-064M	3.45 - 3.55	0.08	12.70	17.80	0.64	CERZ

Most parts manufactured in spring steel

